

Stella McCartney yellow bandage dress, R7 300, Neo Boutique; yellow tights (worn as socks), R49, Cameo; Eggenberg heels, R999, Aldo; Lara Bohinc lamb and snakeskin clutch, R4 760, Delaila earrings, R760, Felder Felder gold necklace (worn on reverse side), R1 218, all Iracema Boutique.

Justin, Geoff and Dean all wear Craig Port speedos, R399 each, YDE.



# MIAMI VICE

There's no going undercover in summer's loud and proud bodycon pieces

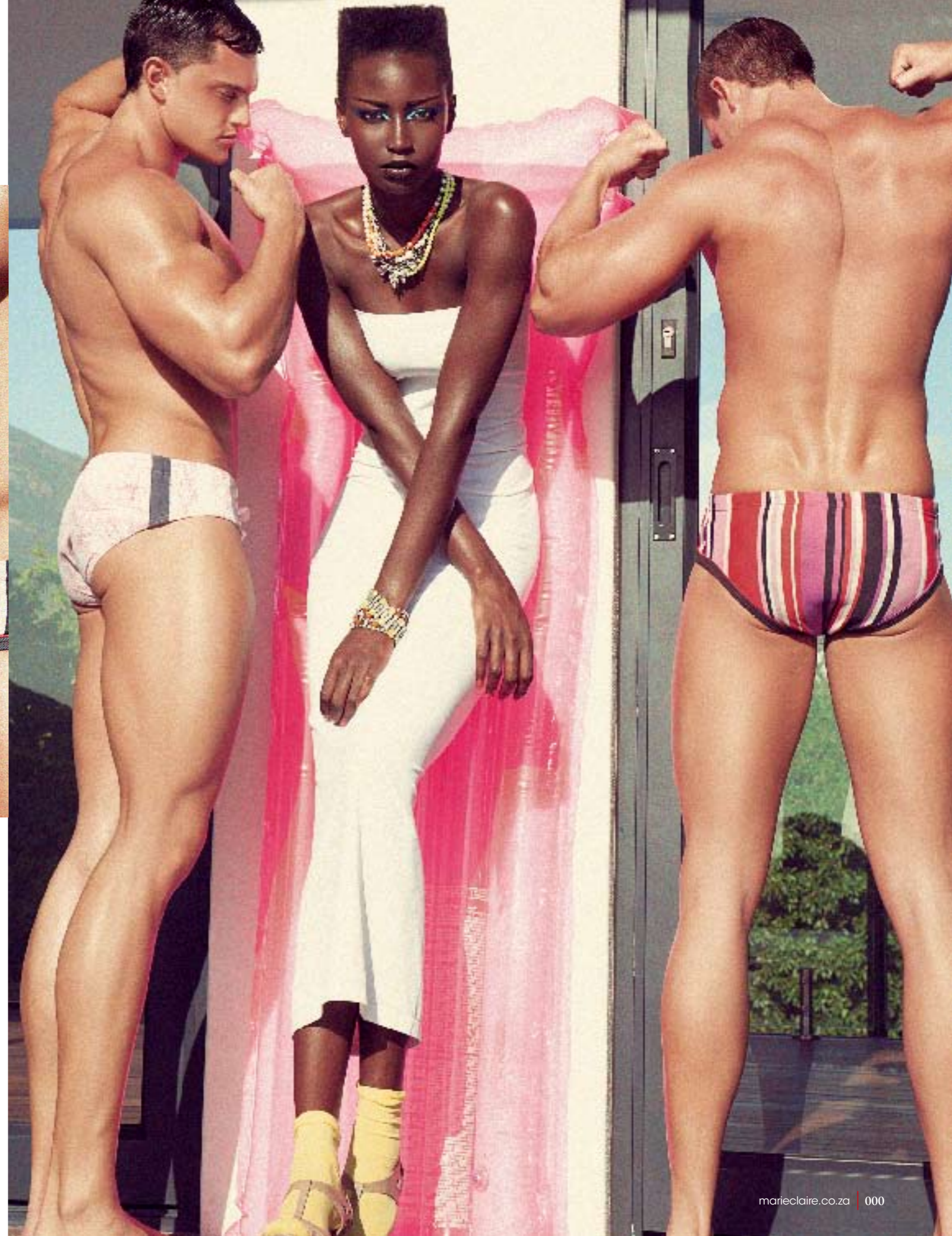
Production Sharon Becker Photographs Daniella Midenge





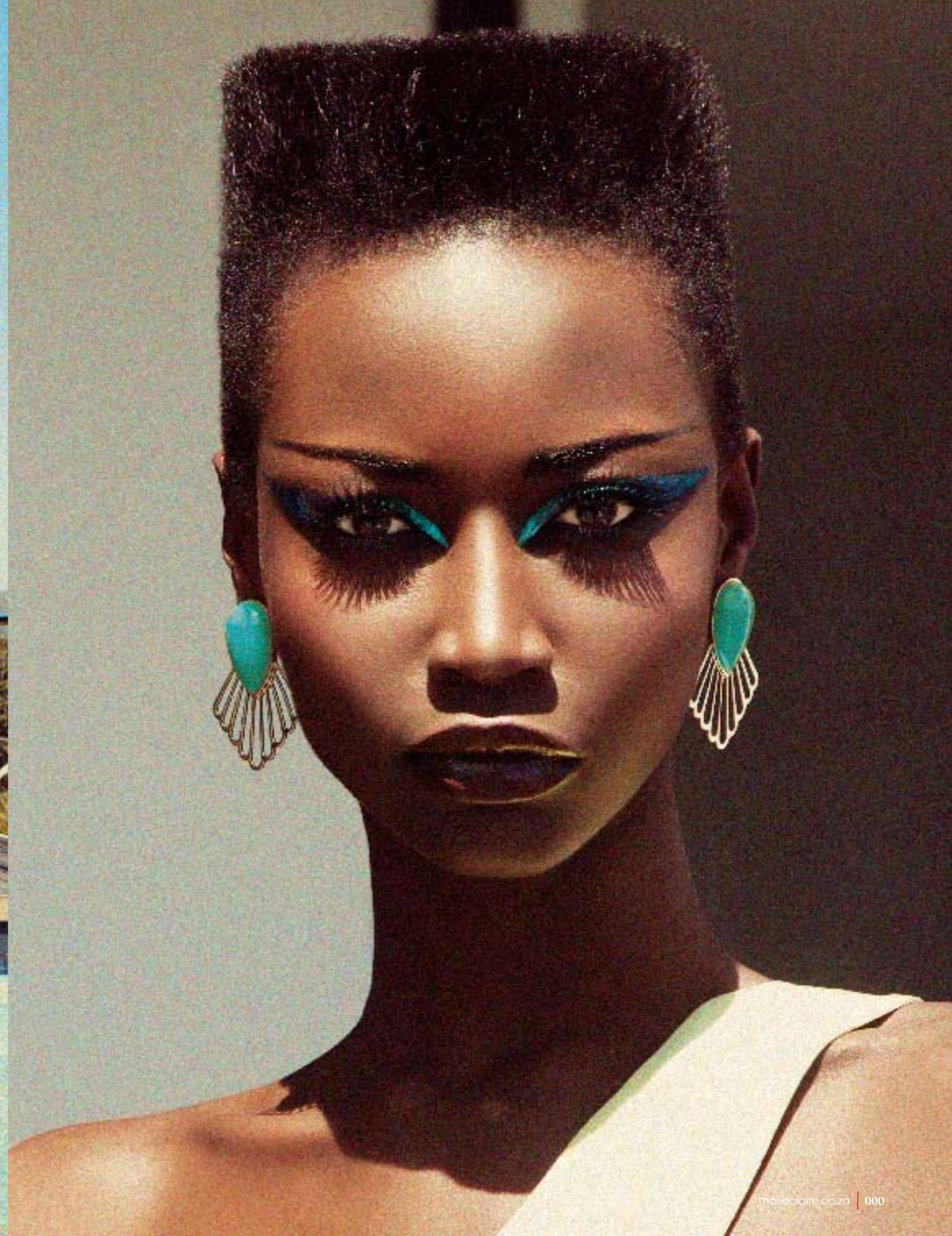
Purple dress, R1 300, Religion; 'Pochette Rococo' clutch, R16 200, Louis Vuitton; Hoss purple and gold rope and satin necklace, R2 495, Hoss black and silver rope and satin necklace, R2 495, Tik Lee.

**Opposite** White dress, R1 990, Wolford; yellow tights (worn as socks), R49, Cameo; Tosoni taupe heels, R1 195, Spitz; Tom Binns neon, crystal and pearl necklace, R29 700, Tom Binns neon and crystal bracelet, R12 100, both Neo Boutique.





This page and opposite  
Felder Felder lime-green  
dress, R5 564, Delaila earrings,  
R925, both Iracema Boutique;  
green tights (worn as socks),  
R49, Cameo; Cosmo green  
heels, R2 195, San Marina;  
Balenciaga chunky bracelet,  
R4 500, Neo Boutique.





Tadashi Shoji pink dress, R5 995,  
Tik Lee; 'Flore' sunglasses, R3 050,  
Louis Vuitton; Delaila black and  
pink cuff, R1 865, Iracema Boutique.

**Opposite** Blue Fifties-style bikini,  
R1 950, Tam Tam Collection; blue tights  
(worn as socks), R49, Cameo; Cesare  
Paciotti navy heels, R6 990, Preview;  
'Conspiration Pilote Canvas' multigold  
sunglasses, R4 350, Louis Vuitton;  
Lara Bohinc necklace with rainbow  
pendant, R2 200, Lara Bohinc rainbow  
cuff, R2 200, Lara Bohinc rainbow chain  
bracelet, R2 170, all Iracema Boutique.



PRODUCTION ASSISTANT TARRYN MCCUICKE • MAKE-UP LINDA GEDDINGEL, LISINE MARBECKINE • HAIR KEVIN WINTERSTEIN  
MODEL KATE SHINE • BODY BUILDERS JUSTIN DOHERTY, GEOFF WATHELE AND DEAN BASSETT • FOR DETAILS SEE STOCKISTS